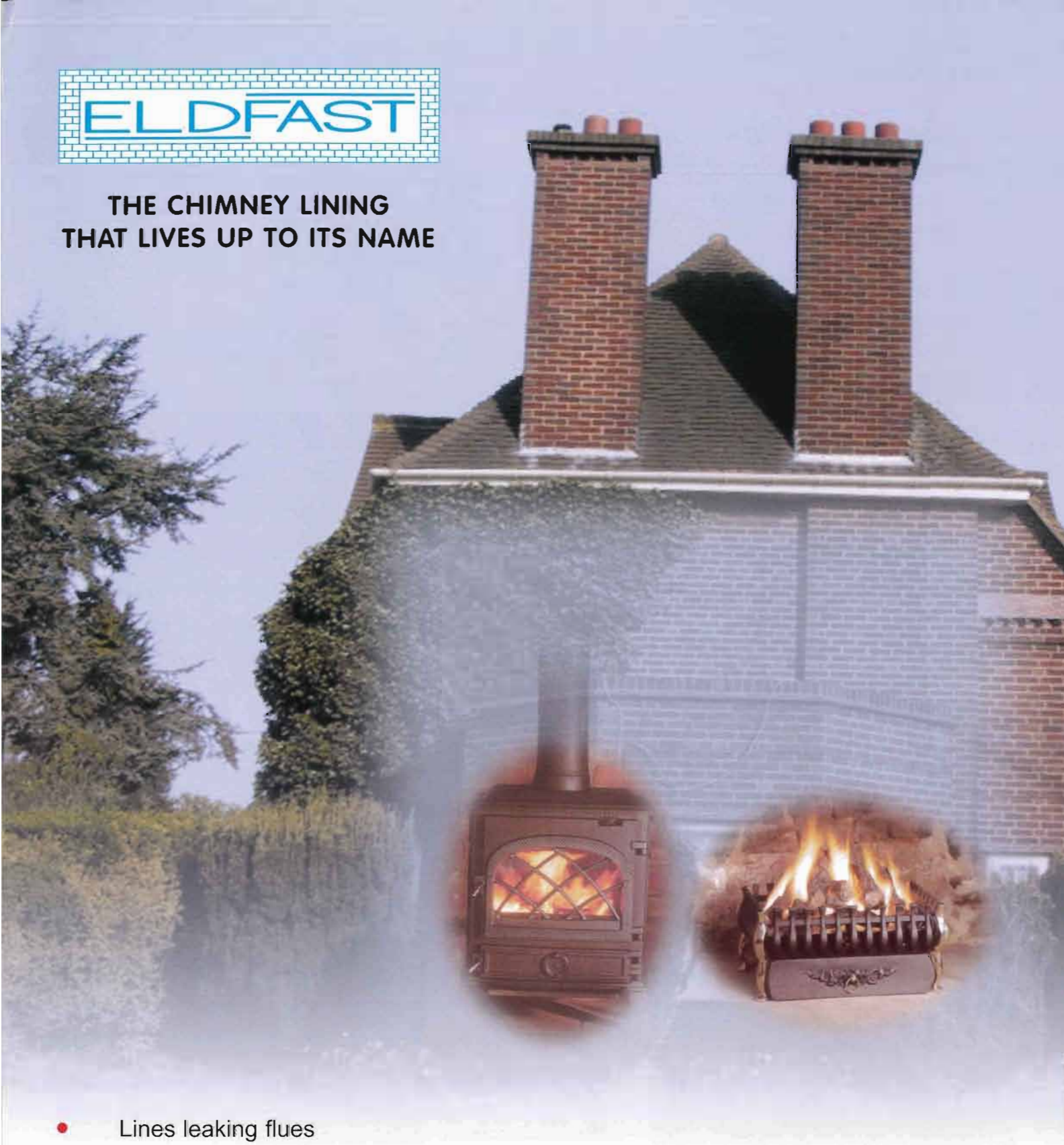




**THE CHIMNEY LINING
THAT LIVES UP TO ITS NAME**



- Lines leaking flues
- Suitable for all fuels
- Class 1 suitable for stoves and open fires
- Unique applications to smaller flue voids e.g. clay liners, gas flue blocks
- Designed to minimise disturbance to the household during installation

Approved contractor's stamp

**SPECIALIST CHIMNEY
SERVICES (North East)
IVY COTTAGE, LOW JOBS HILL
CROOK, Co. DURHAM DL15 9AA
Telephone: 01388 762 632**

Leaking Chimneys

The ravages of time, wind and weather, condensation, frost damage and chimney fires are some of the reasons why chimneys start leaking.

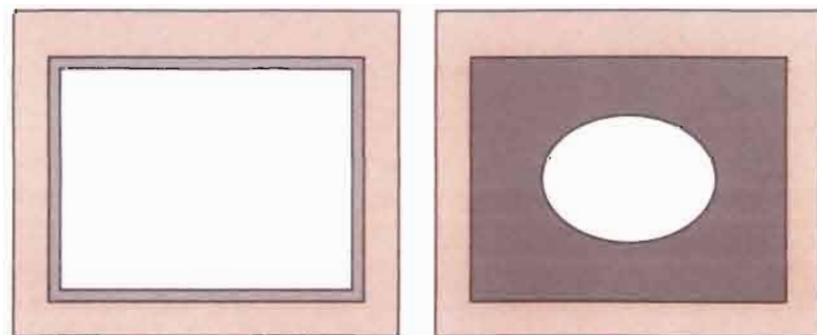
Leakage can give rise to a number of problems, such as the smell of smoke indoors, inadequate updraught, the risk of fire or carbon monoxide poisoning



Chimney cleaning

Before starting sealing and repair work the chimney should be cleaned mechanically to remove soot, tar and loose particles with steel brushes.

PRESERVING CROSS SECTIONAL AREA



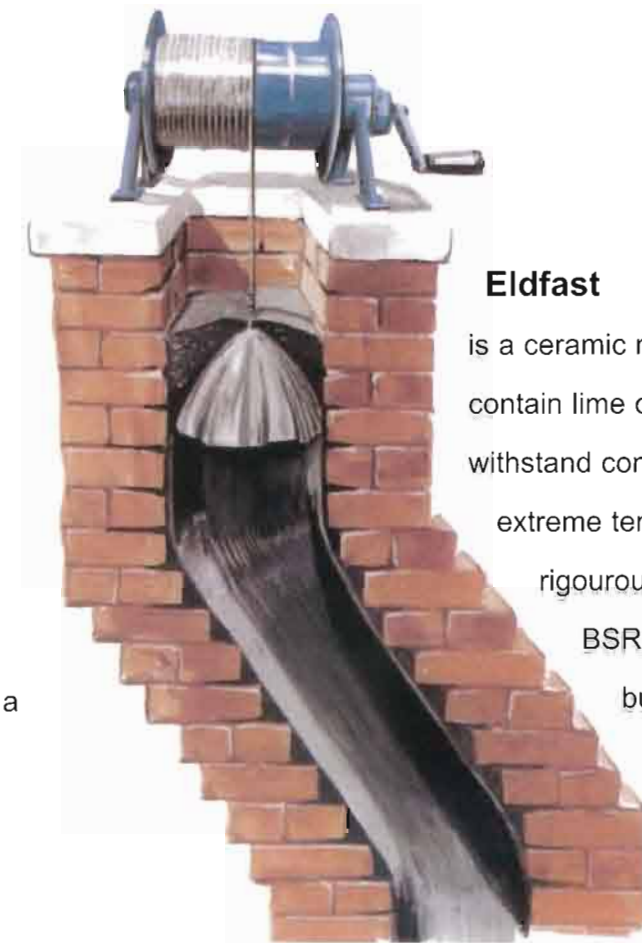
- | | |
|---|--|
|  Masonry flue (for example) |  Free gas area |
|  Eldfast coating (nominal thickness 3mm) |  A traditional cast in-situ coating |

Eldfast

has been developed to meet today's strict requirements and has all the characteristics you would expect of a modern lining and repair agent.

Sealing a chimney

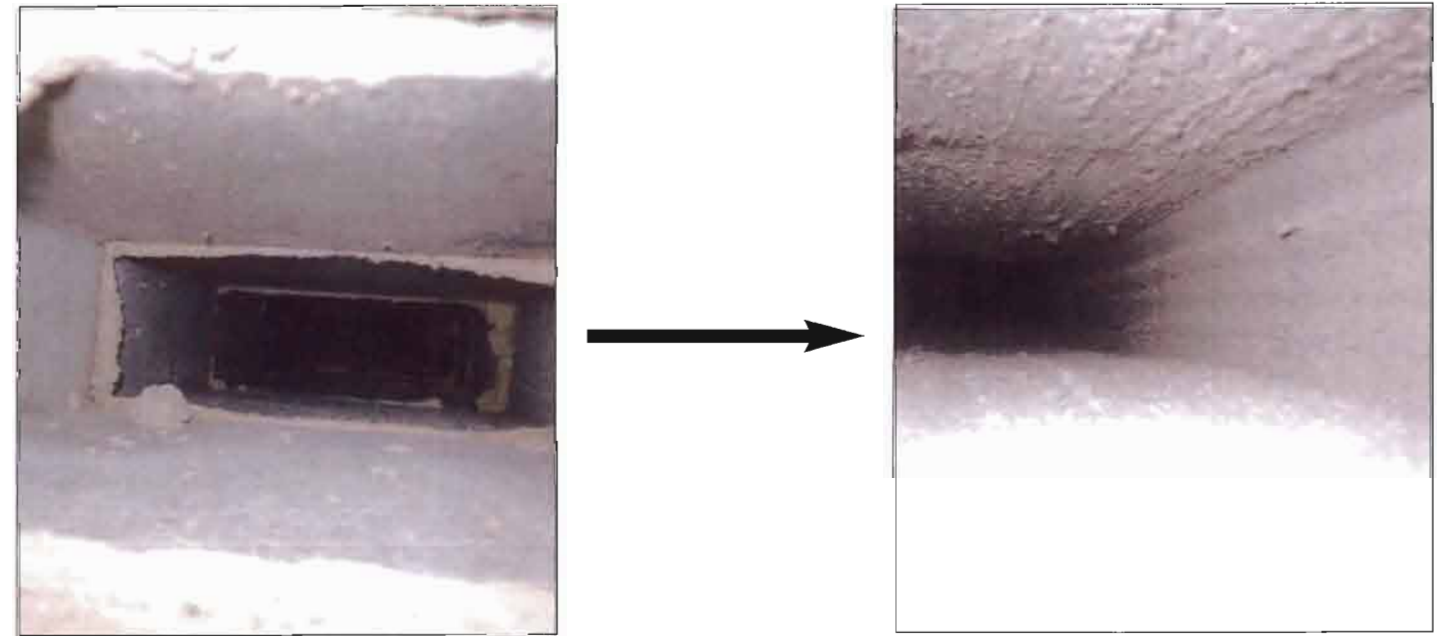
After lining with the Eldfast method you will have a chimney that is leak-proof, very hard-wearing, completely fireproof, and gives a better updraught as a consequence.



Eldfast

is a ceramic material that does not contain lime or cement and can therefore withstand continuous exposure to extreme temperatures having been rigorously tested by Wimlas and BSRIA to conform to current building regulations & requirements after the 1st April 2002 changes.

An Eldfast Lining Transforms a badly performing gas flue block...



Utilising some adaptations to the installer's tooling (for which Landyvent are seeking patent), even gas flue blocks can be cleaned and lined, making full use of the nominal coating thickness of the Eldfast system in order to retain those vital minimum flue measurements. Obviously this same benefit is applicable to several similar types of flue construction: e.g. concrete flue blocks & clay liners which can also be lined and sealed using Eldfast.

Tested and Approved

BSRIA CERTIFICATE

Certificate No.: C13459/1 Issue No: 1 Date of issue: 27 January 2000

TEST CERTIFICATE FOR PRODUCT TESTED USING THE PERFORMANCE REQUIREMENTS CONTAINED IN BS EN 1443 : 1999 AND THE ASSOCIATED DRAFT EUROPEAN CHIMNEY STANDARDS

This is to certify that

The Building Services Research and Information Association

have tested the product describe below and have satisfied themselves that the product meets the Pass 1 and values stated on this certificate based on the criteria contained in BS EN 1443 : 1999, and the associated draft European standards for chimney products.

Product covered by this certificate

ELDEAST FLUE LINING MATERIAL

Supplier - UK distributor



Landy Vent UK Ltd
25 High Street
Stodley
Warwickshire
B80 7HX

Test standards

BS EN 1443 : 1999 - Chimneys - General requirements

prEN 1856-2 : (rev 9) June 1998 - Chimneys - Requirements for metal chimneys - Metal liners and connecting flue pipes

prEN 1857 : (v17) October 1999 - Chimneys - Components - Concrete flue liners

Product designation : T600 N1 S D3

Summary of test Data

EUROPEAN STANDARD CLAUSE			DESCRIPTION	COMMENTS
BS EN 1443	prEN 1856-2	prEN 1857		
6.4.1	6.3	8.3	Gas tightness	Pass N1 and N2 classification
6.3.1	6.4.1	8.1	Heat resistance	Pass T600 classification
6.3.2	6.4.1	8.2	Sootfire resistance	Pass S classification
-	-	8.4	Abrasion resistance	Pass
-	C.7.3.1.2	-	Deformation check	Pass

For further details of the testing reference must be made to BSRIA report No: 15023 dated January 2000.

Full Details of the product and compliance with Approved Document G of the Building Regulations can be found in the Annex to this certificate numbered A15459/1.

Page 1 of 1

The Building Services Research and Information Association, Old Bracknell Lane West, Bracknell, Berkshire RG12 7AH, UK
Tel: +44 (0) 1344 426511 Fax: +44 (0) 1344 487575 e-mail: bsria@bsria.co.uk web: www.bsria.co.uk

Performance tested and approved:

- Resistance to thermal shock
- Resistance to sootfire
- Effect of Sweeping
- Gas tightness before and after thermal shock
- Resistance to attack by acid condensation

BSRIA Approved:

- BS. EN 1443 : 1999
- Pr EN 1856 - 2
- Pr EN 1857
- Product Designated
T600
N1
S
D3



Landy Vent UK Ltd

01527 857 814